

49X WESTERN STAR TRUCK



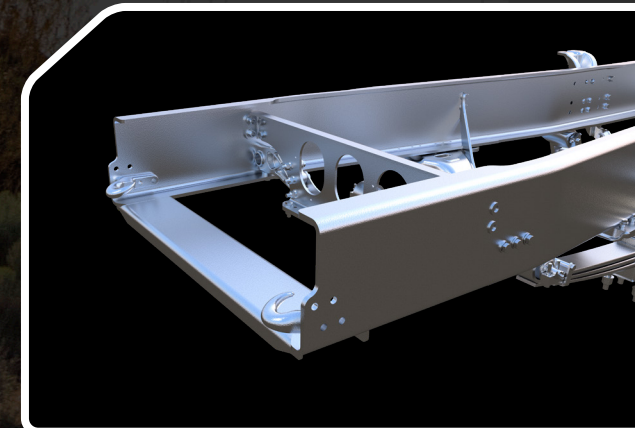
An All-New Vocational Frame

Engineered for the toughest jobs

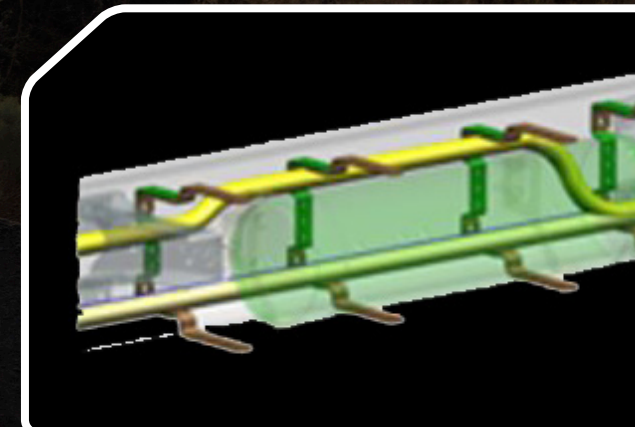
Splayed rail design enables lower engine and cooling packaging, which allows a sloped hood for optimal visibility



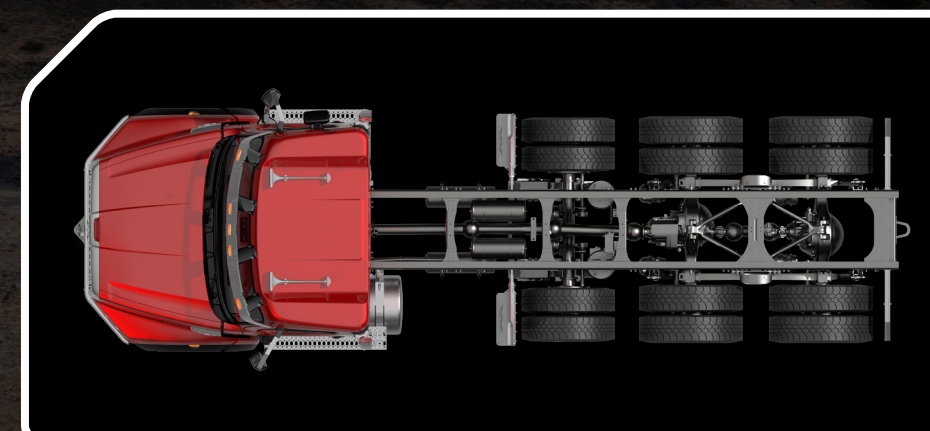
C-channel frame reinforcements with RBM rating of up to 5.4 million inch-lbs. for added strength



Multiple parent rail front frame extensions for applications requiring front-mounted equipment, such as a snow plow.



Innovative routing and clipping to keep wiring and air lines separated for reduced damage and faster diagnosis.



Best-in-class single channel rail strength with RBM rating of 3.7 million inch-lbs. for greater strength, durability and weight savings.