

THE ALL-NEW

# 49X WESTERN STAR TRUCK



# The all-new 49X Western Star Truck



Purpose-built from the ground up by using components that have been tested for the harshest conditions and combined with cutting-edge technology

## IMPROVED VISIBILITY

Single-piece roped-in windshield is 28% larger with 37% improved wiper zone and 77% larger three-piece rear window. Mirrors mounted with reinforcements for reduced vibration.

## TRENCH-STYLE LOW ROOF

Keeps equipment low while maintaining large door opening to provide enough head room for operators.

## STEEL REINFORCED ALUMINUM X-SERIES CAB

Segment's largest cab with 10-13 % greater space and 8% lighter with innovative cab mount system that uses vocational cab isolators mounted outboard for optimal stability and reduced fatigue.

## DUAL-STAGE INTELLIGENT LED HEADLIGHTS

Featuring an internally printed heat grid and ambient air temperature sensor which can melt three millimeters of ice in less than ten minutes at 40 degrees below zero and clear away condensation in warm climates.

## SINGLE CHANNEL FRAME RAIL

Best-in-class RBM strength rating for single channel of 3.7 million inch-lbs. — yielding greater durability and weight savings. For added strength, C-channel frame reinforcements reach RBM rating of up to 5.4 million inch-lbs.

## THE DETROIT ADVANTAGE

Detroit DT12 Vocational series of automated manual transmissions (DT12-V/DT12-VX) validated in over 35 million miles of testing. Best-in-class safety enabled by Detroit Assurance suite of safety systems.

## SLOPED HOOD

Constructed of high-strength, lightweight molded composite material to resist cracking or breaking. Patented ISO Tech Hood Suspension system separates the hood from chassis vibrations for greater durability.

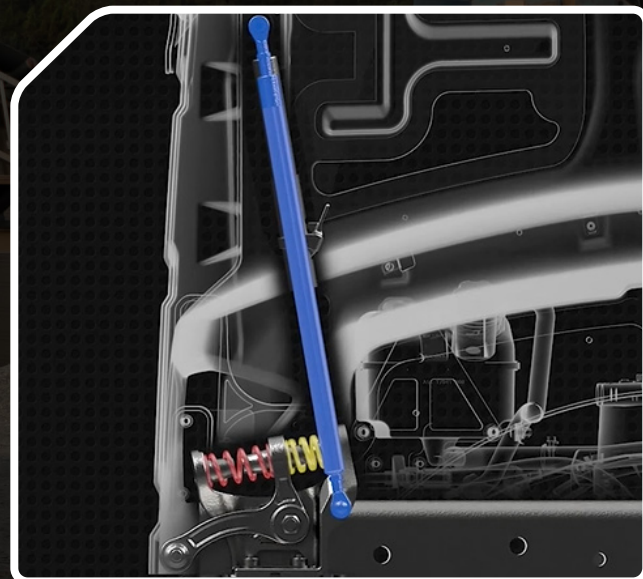
49X WESTERN STAR TRUCK



# The Industry's Most Durable Hood System

ISO Tech Hood Suspension System delivers exceptional durability

Composite construction for strength, greater impact-resistance, and weight savings to haul more payload to the job site



Patented ISO Tech Hood Suspension System isolates the hood from the chassis, absorbing impact from rough terrain on the job site to reduce fatigue on drivers.



Tested like no other truck before: 400h in the shaker lab representing 800,000 vocational miles; 230,000 door slams representing the lifetime of the truck; multiple cab crush and impact tests.



Sloped hood offers greater forward visibility through a 28% larger windshield

49X WESTERN STAR TRUCK



# Best-in-Class Visibility

Larger windshield for increased safety



One-piece roped in windshield 28% larger than legacy windshield for greater visibility; impact-resistant and heated windshield options available.



77% larger three-piece rear window for clear look around.



Wiper zone improved by 37% for optimal view under all conditions. Best-in-Class HVAC System to keep all windows clear.



Innovative C-bar mirror system mitigates the impact of road vibrations for improved, optimizing operator experience and improving durability.

49X WESTERN STAR TRUCK

# The X-Series Cab

Designed for the vocational operator



Steel-reinforced aluminum cab designed using advanced topology optimization ensures toughness and durability, while reducing weight.



Innovative cab mount system for optimal stability and reduced operator fatigue.



Designed for ergonomic ingress and egress, 70 degree door opening, five hand holds, and optimized staircase step design.



Composite trench-style low roof for optimized over-cab equipment placement for lower cab height, while maintaining a large opening for operator ingress and egress.

49X WESTERN STAR TRUCK



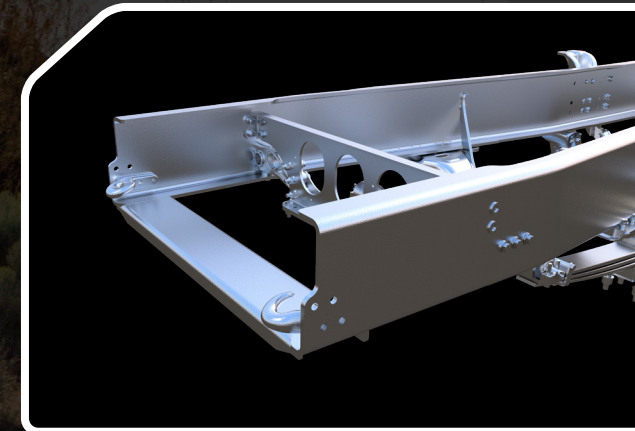
# An All-New Vocational Frame

Engineered for the toughest jobs

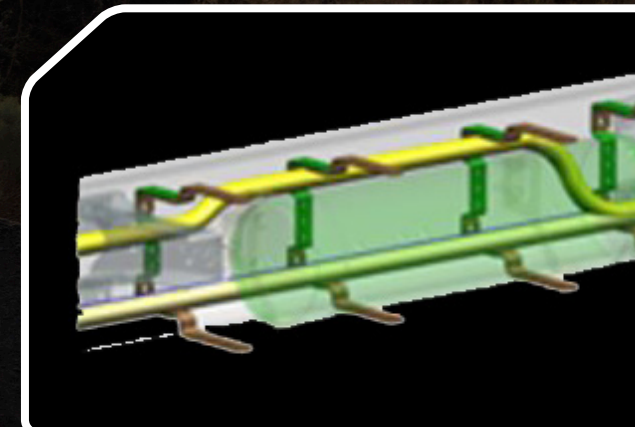
Splayed rail design enables lower engine and cooling packaging, which allows a sloped hood for optimal visibility



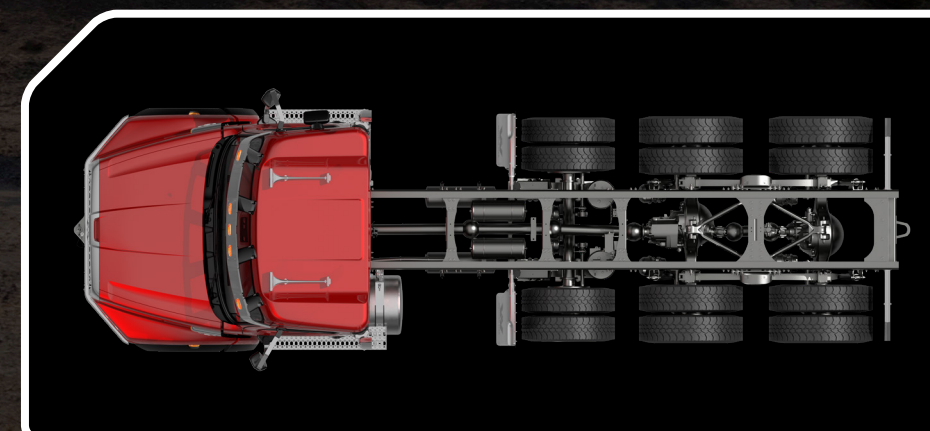
C-channel frame reinforcements with RBM rating of up to 5.4 million inch-lbs. for added strength



Multiple parent rail front frame extensions for applications requiring front-mounted equipment, such as a snow plow.



Innovative routing and clipping to keep wiring and air lines separated for reduced damage and faster diagnosis.



Best-in-class single channel rail strength with RBM rating of 3.7 million inch-lbs. for greater strength, durability and weight savings.